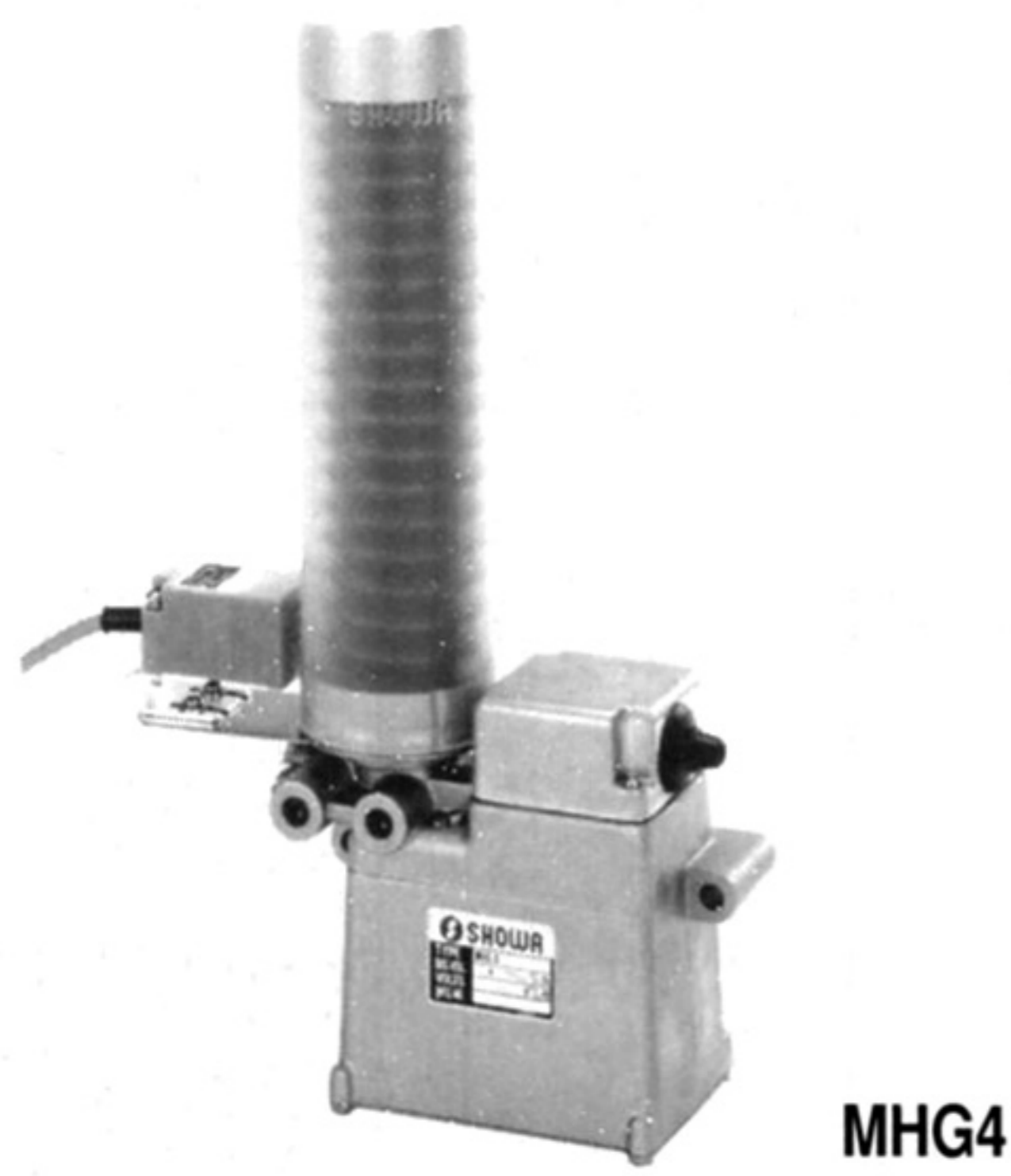
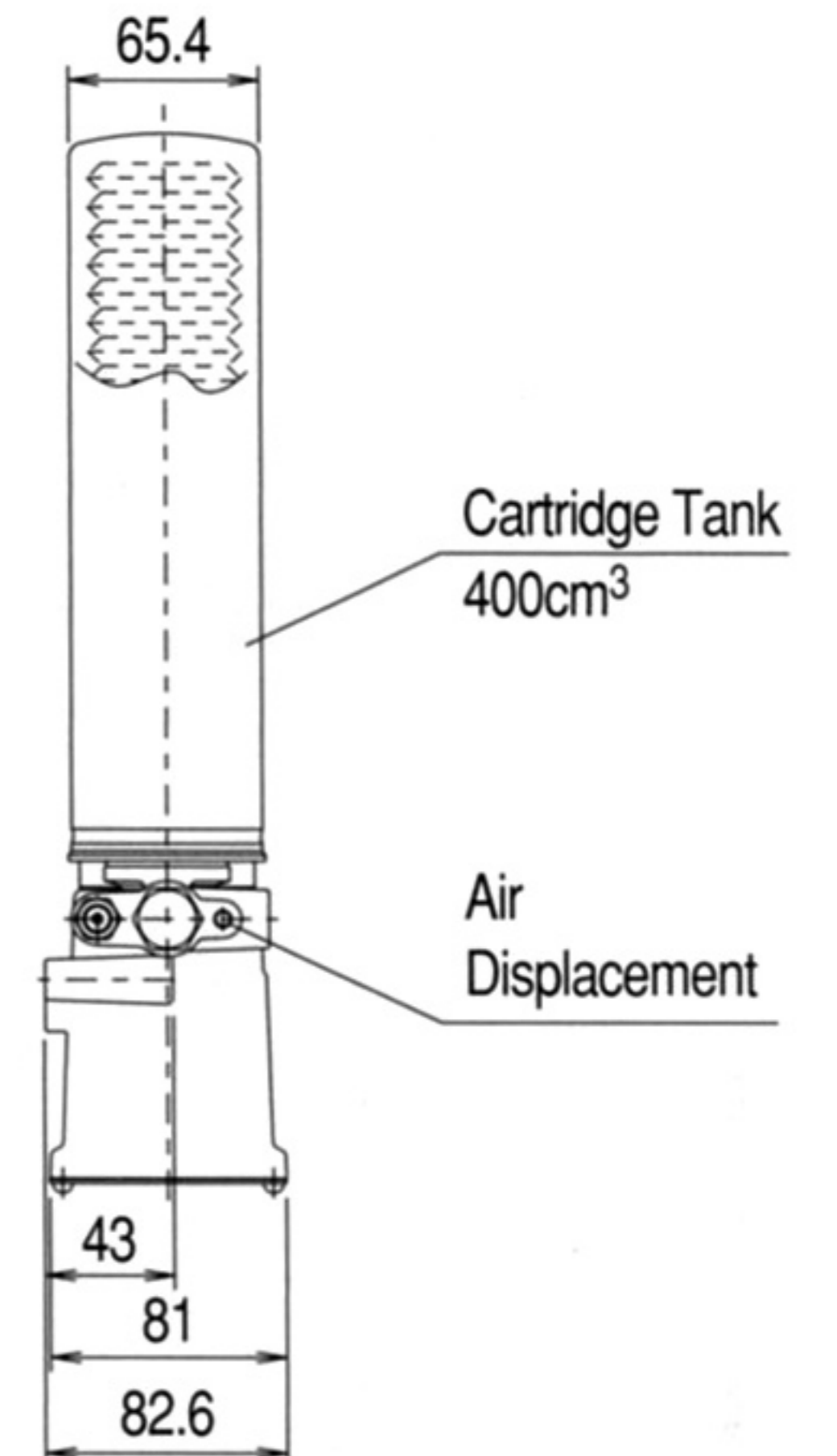
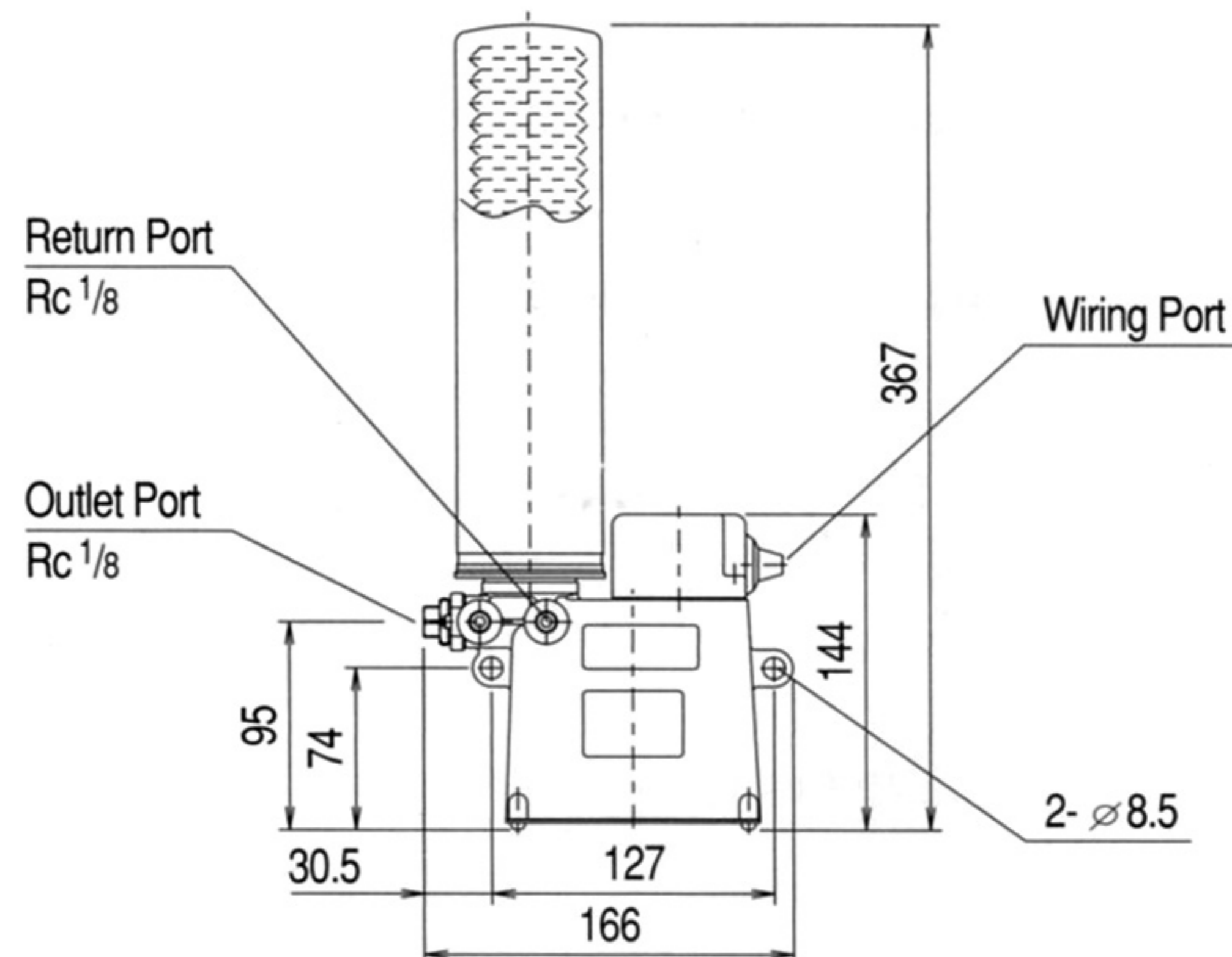


## MHG4 Motorized Sign Pump

- Compact electronically operated grease pump for smaller applications
- Discharges 4.5cm<sup>3</sup>/min or 5.5cm<sup>3</sup>/min depending upon power option selected



MHG41C



### MODEL CODE MHG 4 \* \* \*

**Motor Power Code**  
C : 1 Phase 100V 50/60Hz  
B : 1 Phase 200V 50/60Hz  
D : DC24V

**Level Switch**  
- : No Level Detecting  
D1 : DC 3 Line Type NPN NO  
D2 : DC 3 Line Type NPN NC  
A1 : AC 2 Line Type NO  
A2 : AC 2 Line Type NC

**Grease Container Type**  
1 : Cartridge  
2 : Grease Cup

**Discharge Volume**  
4 : 4.5m<sup>3</sup>/min (50Hz) 5.5cm<sup>3</sup>/min (60Hz)

**Base Code**

### SPECIFICATION

MODEL CODE	Discharge Vol. (cm <sup>3</sup> /min)	Max. Discharge Pressure (MPa)	Outlet Port Size	Container & Capacity (cm <sup>3</sup> )	Operating Temp. Range	Applicable Grease
MHG41	4.5 @ 50Hz	12	2 - Rc 1/8 (Select 1 Port)	Cartridge 400	-5 ~ 40 °C	NLGI No.000 ~ 1
MHG42	5.5 @ 60Hz			Grease Cup 300		
	4.5 @ DC24V					

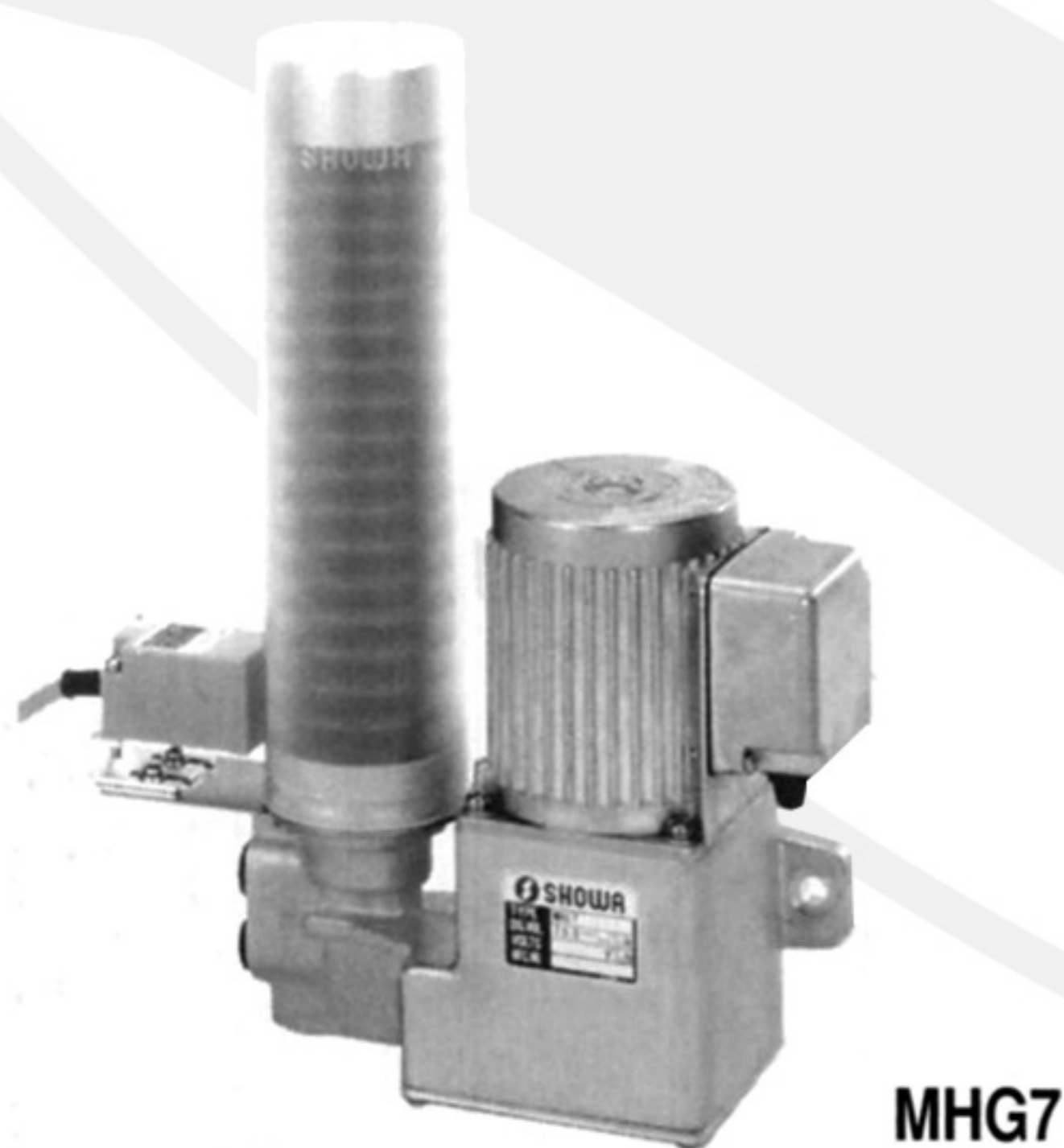
### POWER SPECIFICATION

Power Code	C		B		D
Voltage (V)	1Phase 100		1Phase 200		DC24
Frequency (Hz)	50	60	50	60	-
Current (A)	1.2	0.8	0.7	0.5	0.38
Rating	10 mins		5 mins		10 mins

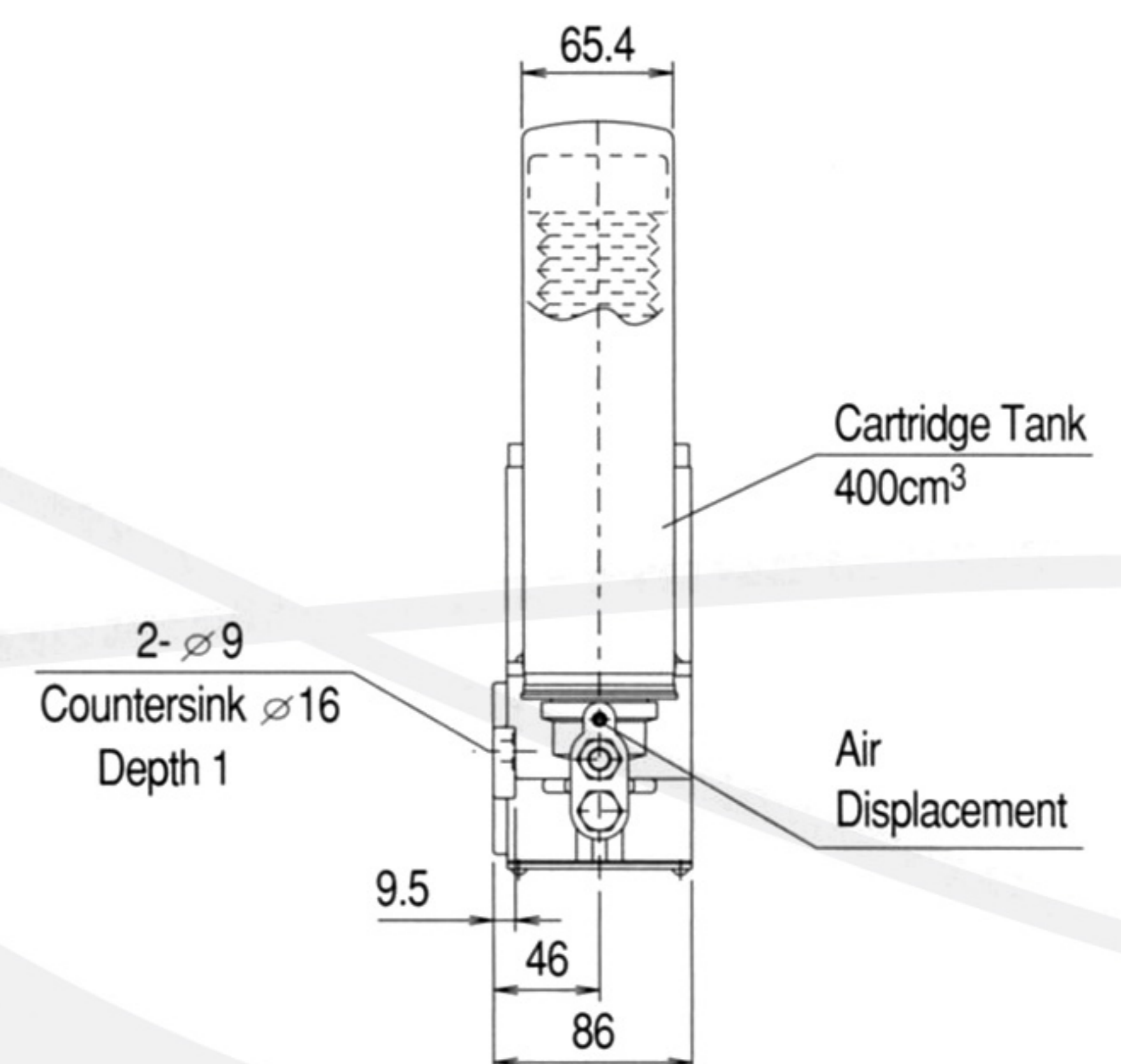
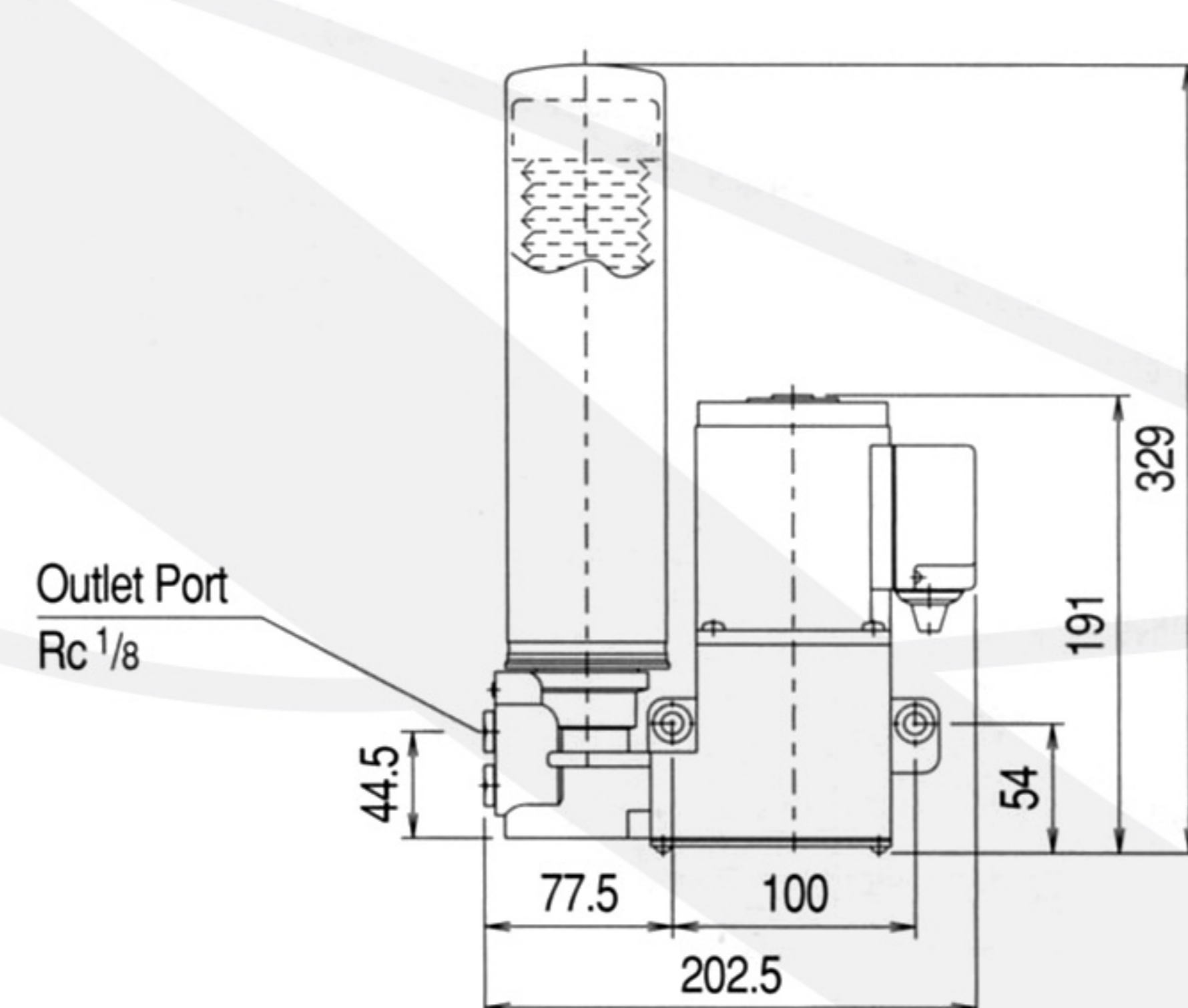
\* Please use our recommended greases or one of SHOWA's system specific greases.  
\* Avoid using different types of greases together. (Do not mix)

## MHG7 Motorized Sign Pump

- Compact electronically operated grease pump for mid-range applications
- Discharges 7.5cm<sup>3</sup>/min or 9.0cm<sup>3</sup>/min depending upon power option selected



MHG71C



### MODEL CODE MHG 7 \* \* \*

**Motor Power Code**  
E : 3 Phase AC 200/200 - 220V 50/60Hz  
C : 1 Phase AC 100V 50/60Hz  
M : 1 Phase AC 110V 60Hz  
F : 1 Phase AC 200/200 - 220V 50/60Hz

**Level Switch**  
- : No Level Detecting  
D1 : DC 3 Line Type NPN NO  
D2 : DC 3 Line Type NPN NC  
A1 : AC 2 Line Type NO  
A2 : AC 2 Line Type NC

**Grease Container Type**  
1 : Cartridge  
2 : Grease Cup

**Discharge Volume**  
7 : 7.5m<sup>3</sup>/min (50Hz) 9.0cm<sup>3</sup>/min (60Hz)

**Base Code**

### SPECIFICATION

MODEL CODE	Discharge Vol. (cm <sup>3</sup> /min)	Max. Discharge Pressure (MPa)	Outlet Port Size	Container & Capacity (cm <sup>3</sup> )	Operating Temp. Range	Applicable Grease
MHG71	7.5 @ 50Hz	14	2 - Rc 1/8 (Select 1 Port)	Cartridge 400	-5 ~ 40 °C	NLGI No.000 ~ 1
MHG72	9.0 @ 60Hz			Grease Cup 300		

### POWER SPECIFICATION

Power Code	E			C	M	F		
Voltage (V)	3 Phase 200	3 Phase 200	3 Phase 220	1Phase 100	1Phase 110	1 Phase 200	1 Phase 200	1 Phase 220
Frequency (Hz)	50	60	60	50	60	50	60	60
Current (A)	0.29	0.25	0.27	0.7	0.6	0.35	0.35	0.35
Rating	Continuous							
Output & Poles	25W x 4P							

\* Please use our recommended greases or one of SHOWA's system specific greases.  
\* Avoid using different types of greases together. (Do not mix)